

# A DESIGN FRAMEWORK TO AMPLIFY STEM FACULTY AGENCY TOWARDS EDUCATIONAL LEADERSHIP AND INNOVATION

Gemma Henderson - [gemma@miami.edu](mailto:gemma@miami.edu), University of Miami, FL  
Dr. Meagan R. Kendall - [mvaughan@utep.edu](mailto:mvaughan@utep.edu), University of Texas, El Paso  
Dr. Ines Basalo - [i.basalo@miami.edu](mailto:i.basalo@miami.edu), University of Miami, FL



# WELCOME

## INTERACTIVE DESIGN WORKSHOP

---



Join a table and share your HSI context:

**Your name, role, and one thing that you appreciate about the faculty at your institution.**

# DESIGNING FACULTY DEVELOPMENT

## INDIVIDUAL REFLECTION: ACTIVITY

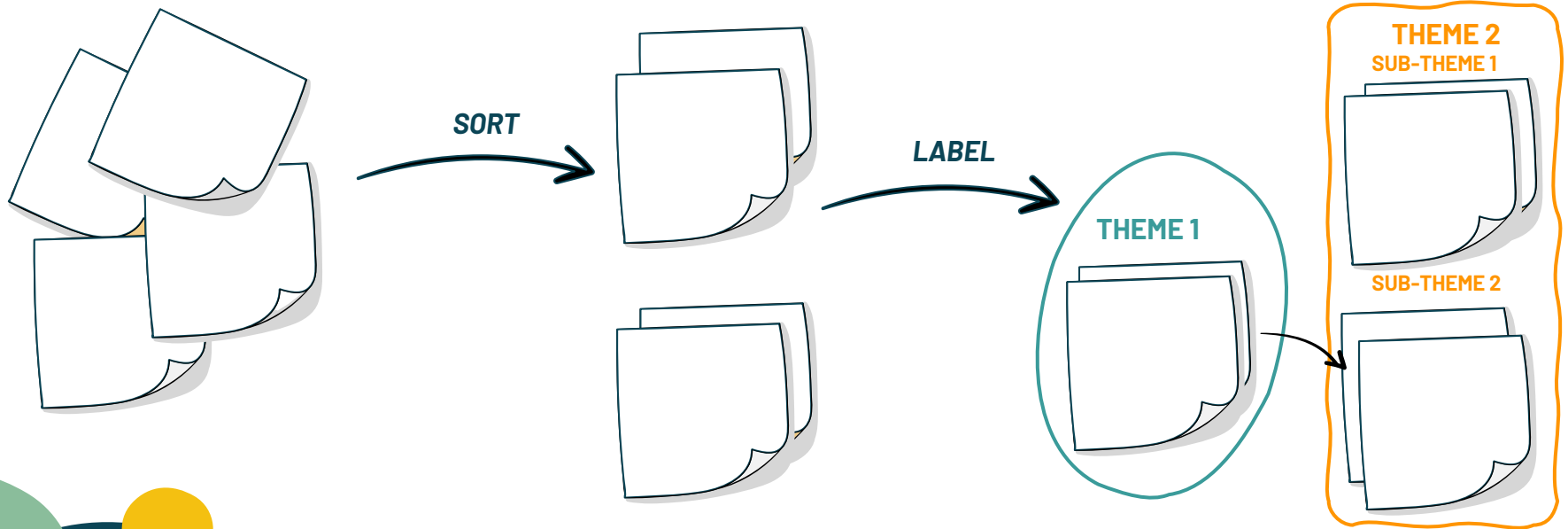


**What are the decisions you make to design a faculty development program at your institution?**

Reflect individually – add one decision per post-it.

# DESIGNING FACULTY DEVELOPMENT

## AFFINITY MAPPING: ACTIVITY



**IDENTIFY THEMES, CONNECTIONS, DISTINCTIONS,  
GROUPINGS, AND SUB-GROUPINGS.**

# DESIGNING FACULTY DEVELOPMENT

## AFFINITY MAPPING: DEBRIEF



**What are the  
decisions you  
typically make?**

# THE AMPLIFY PROJECT

## HISTORY: RETHINKING ENGINEERING EDUCATION AT HSIs

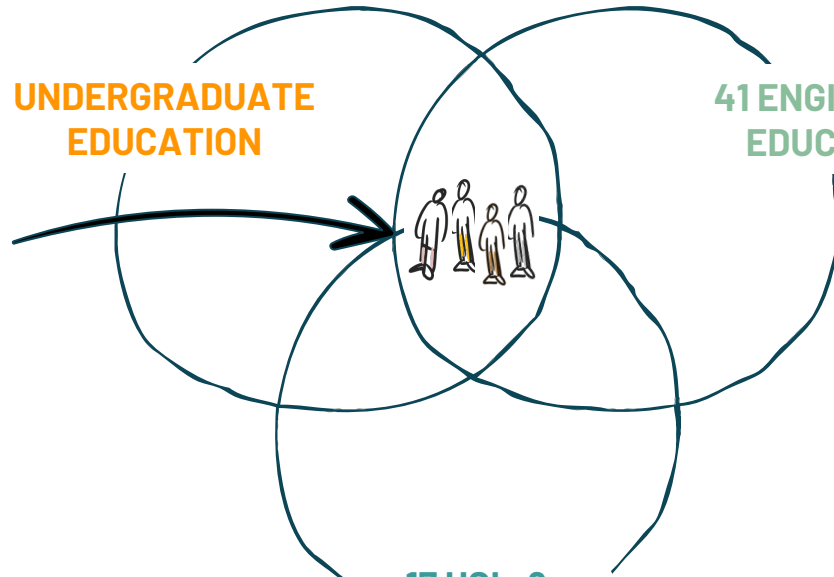
### 3 MULTI-DAY WORKSHOPS

**Identified a need to explore perceptions of Engineering Instructional Faculty (EIF)**

NSF DCL: Improving Undergraduate STEM Education in HSIs. (NSF Award #s: 1764378, 1764249, and 1764166.)

**UNDERGRADUATE  
EDUCATION**

**41 ENGINEERING  
EDUCATORS**



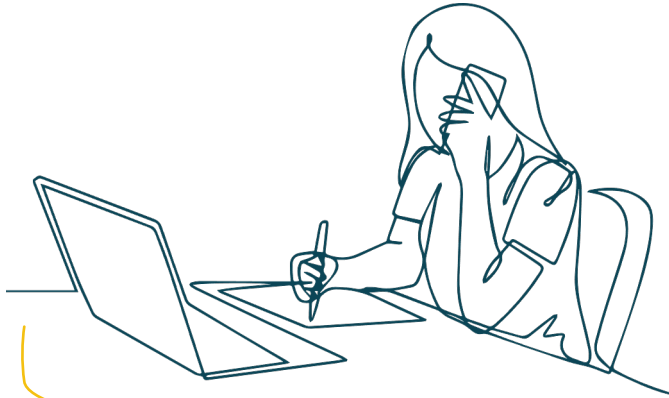
**17 HSIs &  
EMERGING HSIs**

# THE AMPLIFY PROJECT

NOW: DEVELOPING EIF AS LEADERS OF EDUCATIONAL CHANGE

## CASE STUDY INTERVIEWS

Perspectives of EIFs



## EDUCATIONAL DEVELOPMENT LIT. REVIEW

Scholarship, CTL inventory, affinity mapping



A **DESIGN FRAMEWORK** TO AMPLIFY STEM FACULTY AGENCY  
TOWARDS EDUCATIONAL LEADERSHIP AND INNOVATION

# THE AMPLIFY PROJECT

NOW: DEVELOPING EIF AS LEADERS OF EDUCATIONAL CHANGE

## CASE STUDY INTERVIEWS

Perspectives of EIFs

## EDUCATIONAL DEVELOPMENT LIT. REVIEW

Scholarship, CTL inventory, affinity mapping

EIFs are pursuing professional development to better support their students at HSIs.

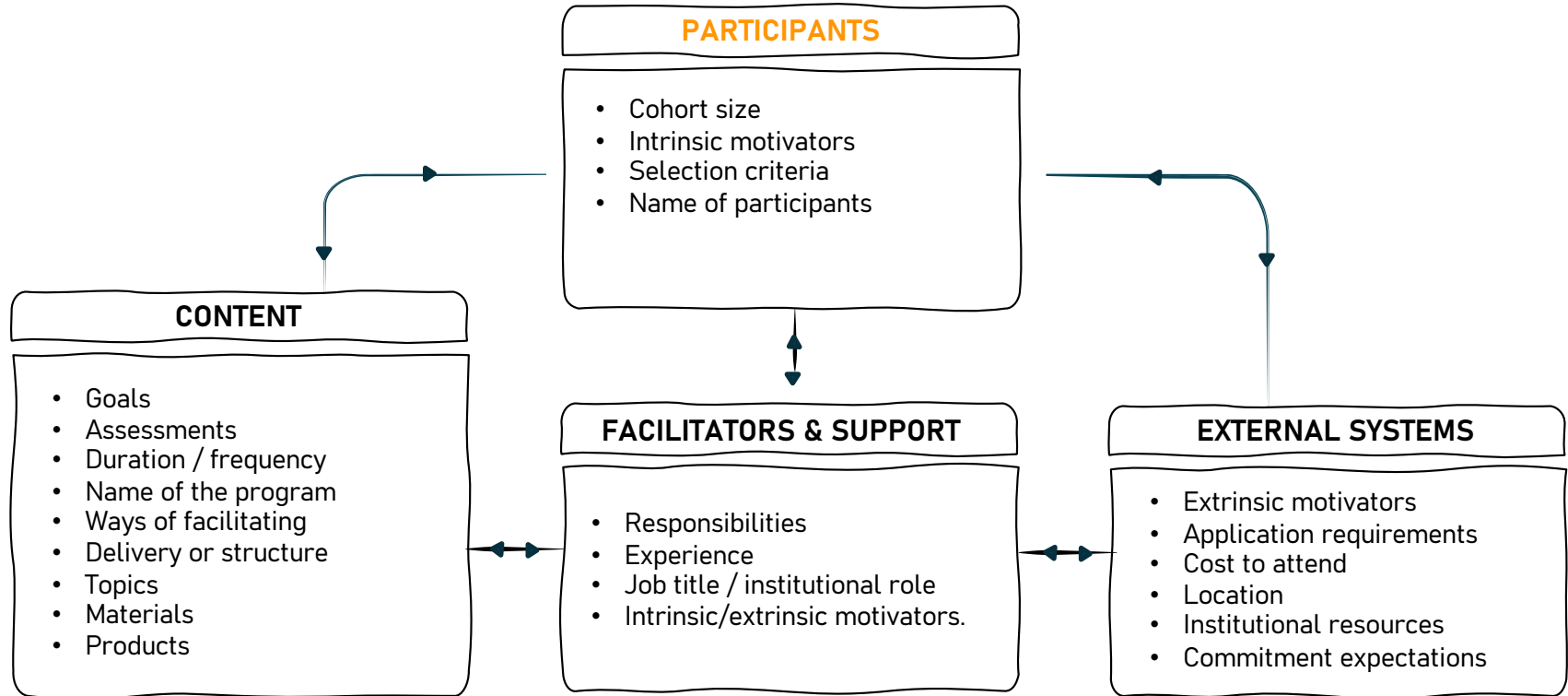


The decisions that are made impact how STEM faculty pursue professional development.

A **DESIGN FRAMEWORK** TO AMPLIFY STEM FACULTY AGENCY  
TOWARDS EDUCATIONAL LEADERSHIP AND INNOVATION



# INPUTS THAT DRIVE FACULTY DEVELOPMENT DECISIONS



**DESIGN FRAMEWORK**

# THE AMPLIFY INSTITUTE

## APPLYING THE FRAMEWORK TO DESIGN THE INSTITUTE



**A self-sustaining, within- and cross-institutional faculty development model that equips engineering instructional faculty and amplifies their leadership of educational change at HSIs.**

The AMPLIFY Institute will seek to support and amplify EIF efforts towards servingness at HSIs, including many non-academic outcomes

*Review the AMPLIFY Institute handout at your table.*

# THE AMPLIFY INSTITUTE

## CRITIQUE THE DESIGN FRAMEWORK: ACTIVITY



What would you **use**, **dismiss**, **change** about the AMPLIFY Institute in your institutional context?

# THE AMPLIFY PROJECT

## RESOURCES & PUBLICATIONS

---

### **Developing EIF as Leaders of Educational Change at Hispanic Serving Institutions**

[utep.edu/engineering/amplify/](http://utep.edu/engineering/amplify/) (Available April 2022)

### **Rethinking Engineering Education at Hispanic Serving Institutions**

[eel.utep.edu/HSI/](http://eel.utep.edu/HSI/)

# THE AMPLIFY PROJECT

## ACKNOWLEDGEMENT



This material is based upon work supported by the National Science Foundation under Grant Numbers 1953560 and 1953586. Any opinions, findings, and conclusions or recommendations expressed in this material are those of *the* authors and do not necessarily reflect the views of the National Science Foundation.

We would like to thank our research team for all the support they have provided throughout this study. The authors would also like to acknowledge the invaluable insights, enthusiasm, and contributions of the HSI engineering instructional faculty who participated in these interviews, being open and willing to share their experiences.

# A DESIGN FRAMEWORK TO AMPLIFY STEM FACULTY AGENCY TOWARDS EDUCATIONAL LEADERSHIP AND INNOVATION

Gemma Henderson - [gemma@miami.edu](mailto:gemma@miami.edu), University of Miami, FL  
Dr. Meagan R. Kendall - [mvaughan@utep.edu](mailto:mvaughan@utep.edu), University of Texas, El Paso  
Dr. Ines Basalo - [i.basalo@miami.edu](mailto:i.basalo@miami.edu), University of Miami, FL  
Dr. Alexandra Coso Strong - [astrong@fiu.edu](mailto:astrong@fiu.edu), Florida International University

