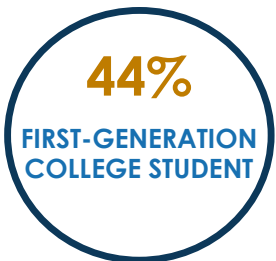


Implementing a Summer Bridge Model: Building Bridges to Community College for Latinx Students



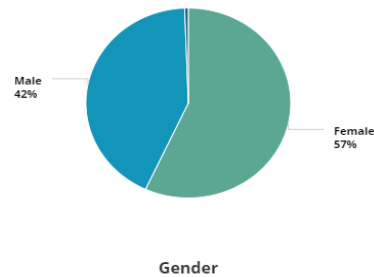
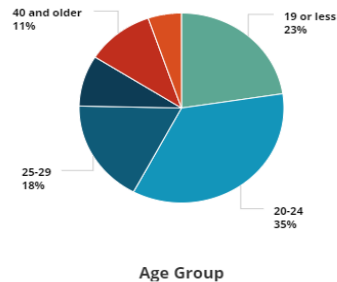
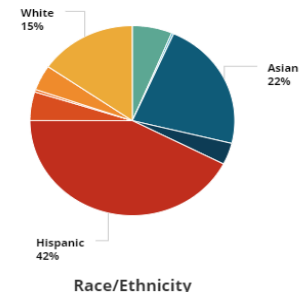
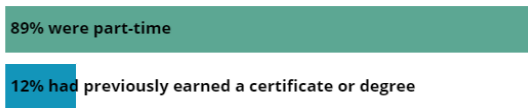
Elizabeth Gonzalez, Ph.D. and Claudia Barajas
San Jose City College
March 10th, 2020
AHSIE 12th Annual Best Practices Conference

SAN JOSE CITY COLLEGE: STUDENT PROFILE



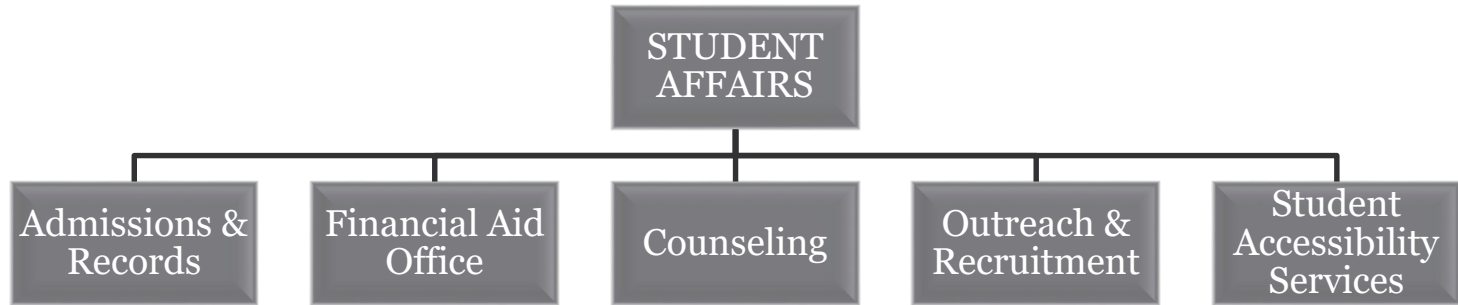
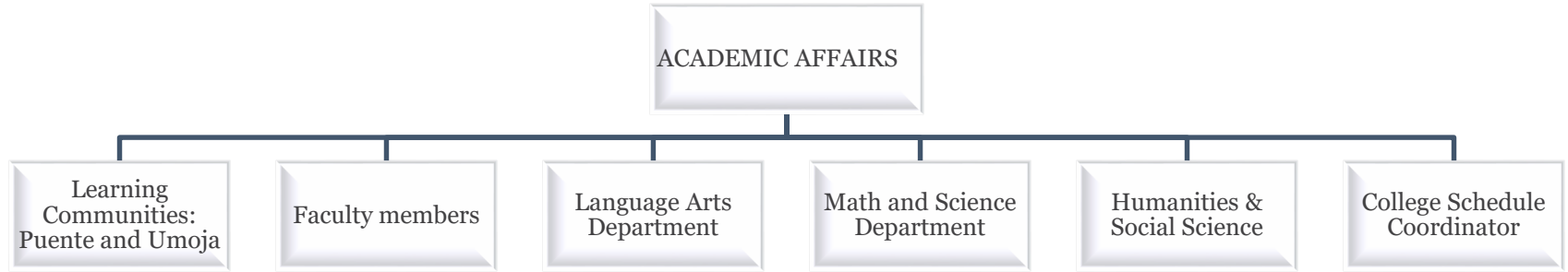
Students

Many different types of students are taking classes in this program area. It may be helpful to tailor your programs based on the type of student.

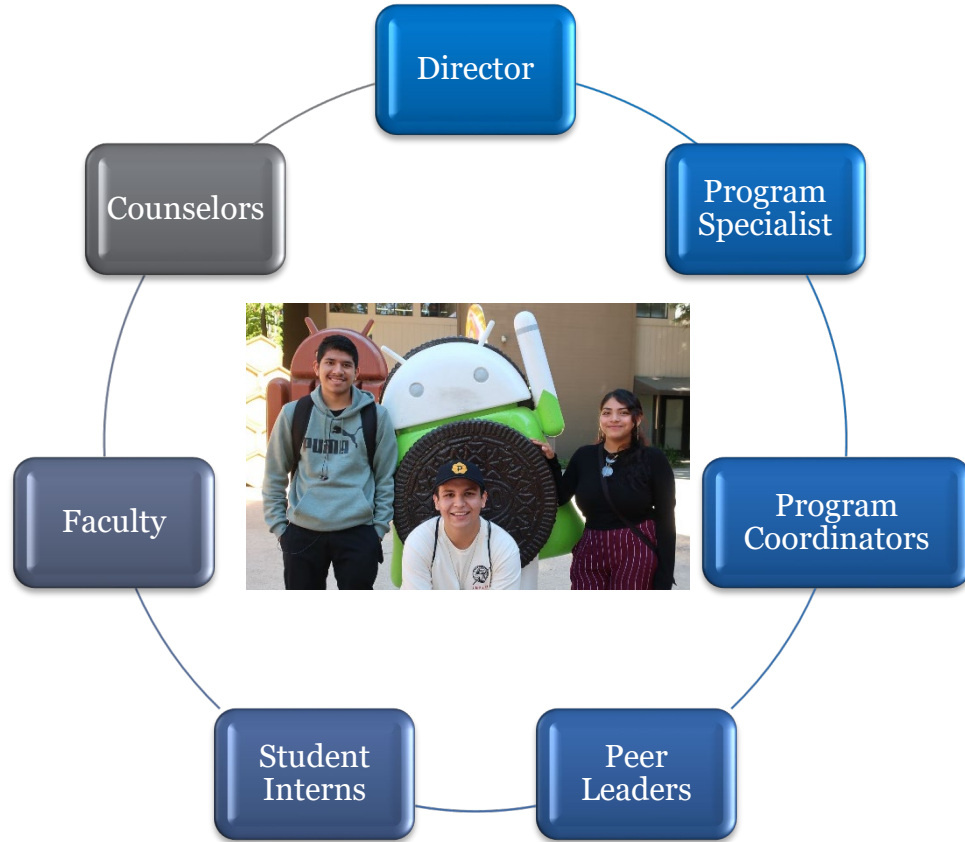


Source: Chancellor's Office Management Information System

KEY PLAYERS INVOLVED



KEY STAFF DURING THE PROGRAM



BUILDING SENSE OF BELONGING AND LEADERSHIP



UC Santa Cruz
Experiential
Program



Hire 15
Peer Leaders



7-Day
Training



Team Building
Activity

SUMMER BRIDGE DAILY MODEL

ELEM.
STATISTICS

PRE-
CALCULUS

Embedded Peer Leaders

ENGLISH
COMP

ETHNIC
STUDIES

Lunch

Free Lunch

Supplemental
Instruction

Peer Leaders, Faculty

Study Cafe

Peer Leaders, Faculty, Counseling,
Financial Aid and Literacy

NON-ACADEMIC SERVICES

- Supplemental Instruction (SI)
- Books & Calculator Lending
- Counseling
- Financial Aid
- Financial Literacy
- Field Trips (UC Santa Cruz, Google Headquarters & Monterey Bay Aquarium)



“I was able to build strong and trustworthy connections with my SI leaders, professors and counselors”

- 2019 Summer Bridge Student

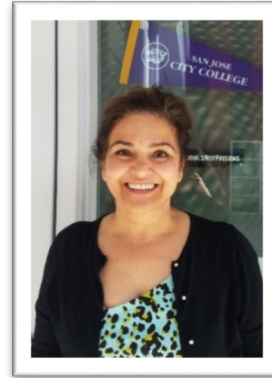
INSTRUCTIONAL FACULTY

MULTIPLE EMBEDDED
PEER LEADERS

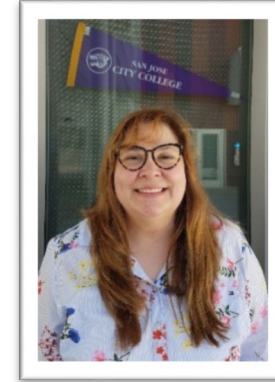
SMALL GROUP
LEARNING

STUDENT CENTERED
ACTIVITY

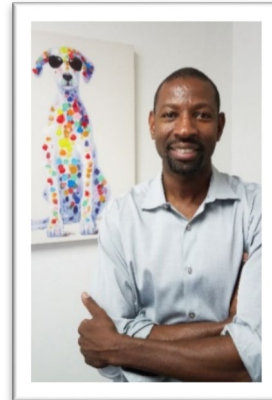
GROWTH MINDSET



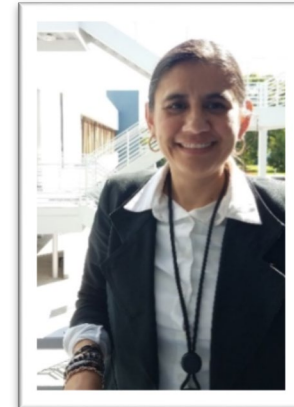
Azar
Sioshans



Patricia
Alvarez



Dedrick
Griffin



Patricia
Alvarez

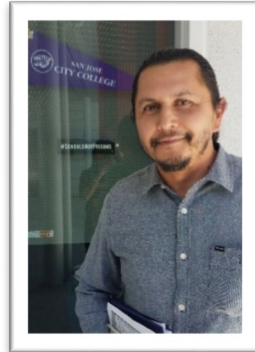
COUNSELING FACULTY

ACADEMIC PLACEMENT
USING MULTIPLE
MEASURES

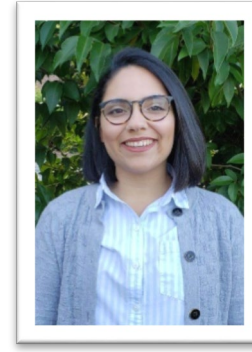
EDUCATION PLANS

EARLY ALERT SUPPORT

REFERRALS TO CAMPUS
RESOURCES AND SERVICES



Julio Flores



Sabrina Hagmann



Yesenia Escobar

*“I will walk into college without fear of
what will come next.”*

– Adrian, 2019 Caminos Bridge

2019 SUMMER BRIDGE

139

PARTICIPANTS

82%

Latinx
Heritage

84%

COMPLETION
RATE

87%

SUCCESS RATE
in college level
Math & English

90%

Female students'
passing rate

83%

Male students'
passing rate

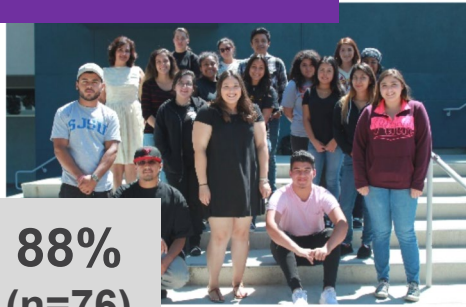
95%

SUMMER TO
FALL
RETENTION

*Success Rate refers to students earning an A, B, or C grade.

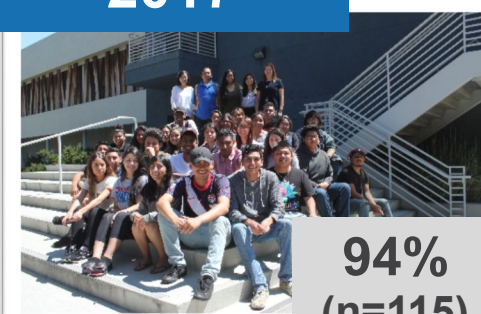
SUCCESS RATES

2016



88%
(n=76)

2017



94%
(n=115)

2018



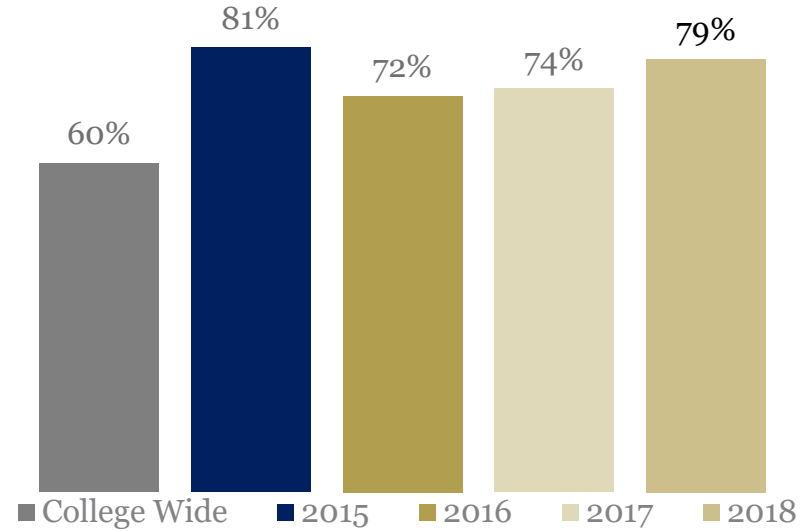
87%
(n=87)

2019



87%
(n=98)

FIRST YEAR PERSISTENCE





Thank you!

Questions?